



Dendrology

FORS 2319



Instructor: Dr. Jeremy Stovall

TAs: Mason Helm, Carlos Jackson

Lecture 1: Intro to Dendro



Before I Forget

- Lab starts NEXT week
 - Human Services 321 Tuesday
 - Human Services 314 Wednesday
 - We'll be inside for this one
- Bring a laptop, tablet, or phone to class next Wednesday



About Me



B.S. Clemson '05



M.S. UVM '07



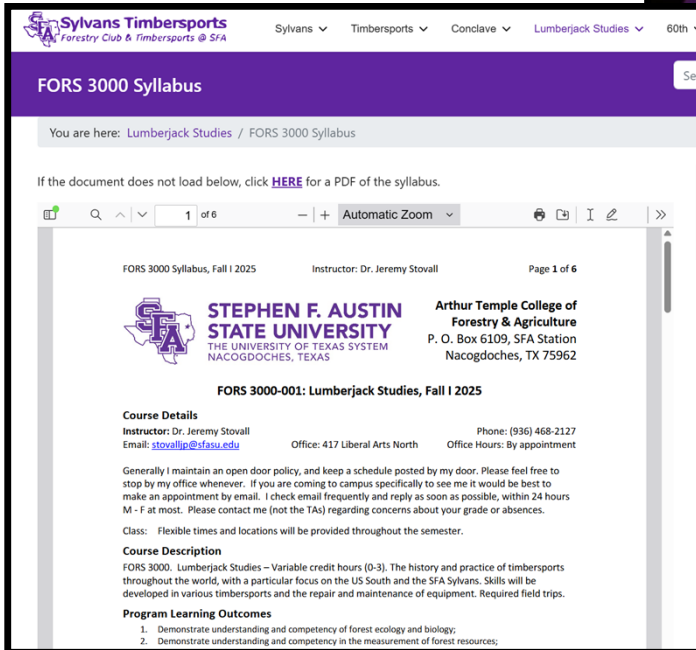
Ph.D. VT '10



Started Aug. '10



Shameless Sylvans Promo



Sylvans Timbersports
Forestry Club & Timbersports @ SFA


Sylvans ▾ Timbersports ▾ Conclave ▾ Lumberjack Studies ▾ 60th ▾

FORS 3000 Syllabus

You are here: Lumberjack Studies / FORS 3000 Syllabus

If the document does not load below, click [HERE](#) for a PDF of the syllabus.

FORS 3000 Syllabus, Fall I 2025 Instructor: Dr. Jeremy Stovall Page 1 of 6

 **STEPHEN F. AUSTIN STATE UNIVERSITY**
THE UNIVERSITY OF TEXAS SYSTEM
NACOGDOCHES, TEXAS

Arthur Temple College of Forestry & Agriculture
P. O. Box 6109, SFA Station
Nacogdoches, TX 75962

FORS 3000-001: Lumberjack Studies, Fall I 2025

Course Details
Instructor: Dr. Jeremy Stovall Phone: (936) 468-2127
Email: stovallj@sfasu.edu Office: 417 Liberal Arts North Office Hours: By appointment

Generally I maintain an open door policy, and keep a schedule posted by my door. Please feel free to stop by my office whenever. If you are coming to campus specifically to see me it would be best to make an appointment by email. I check email frequently and reply as soon as possible, within 24 hours M - F at most. Please contact me (not the TAs) regarding concerns about your grade or absences.

Class: Flexible times and locations will be provided throughout the semester.

Course Description
FORS 3000. Lumberjack Studies – Variable credit hours (0-3). The history and practice of timbersports throughout the world, with a particular focus on the US South and the SFA Sylvans. Skills will be developed in various timbersports and the repair and maintenance of equipment. Required field trips.

Program Learning Outcomes

1. Demonstrate understanding and competency of forest ecology and biology;
2. Demonstrate understanding and competency in the measurement of forest resources;

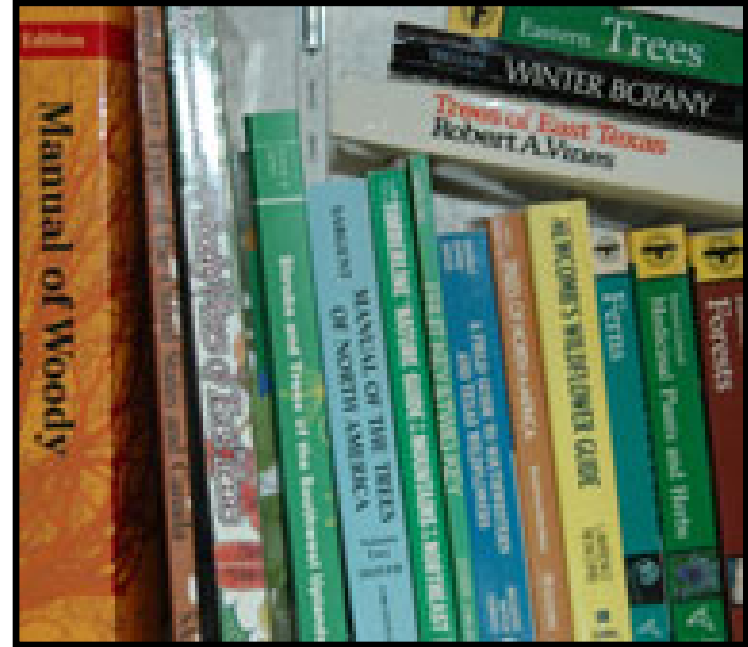


What is Dendrology?

Dendro =



ology=



What is a TREE?



What is a TREE?

- A woody plant that has many secondary branches supported clear of the ground on a single main stem or trunk with clear apical dominance (Wikipedia)
- A woody perennial plant having a single usually elongate main stem generally w/ few or no branches on its lower part (Merriam-Webster)
- A woody plant that at maturity is 13 feet or more in height, with a single trunk at least 3 inches in diameter at breast height, unbranched for at least several feet above the ground, and having a more or less definite crown (Harlow & Harrar; Little)

Are These Trees?

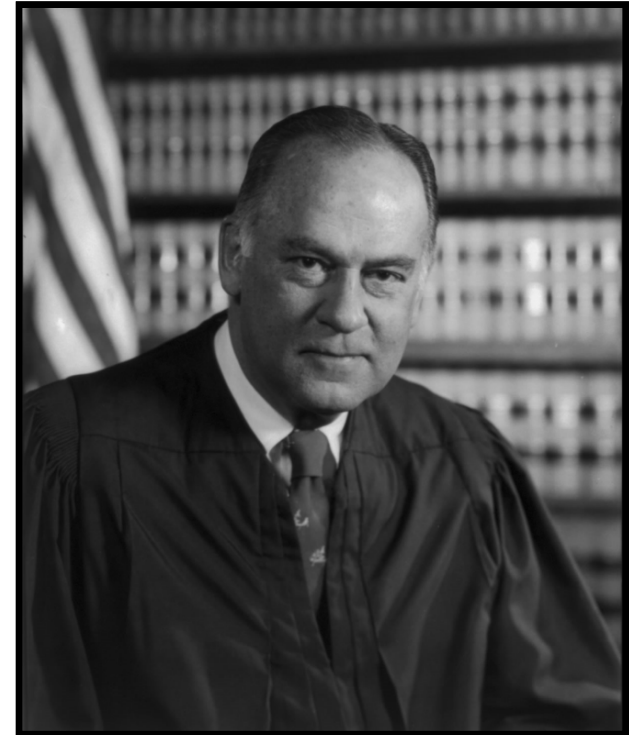


What is a TREE?

“I shall not today attempt further to define the kinds of material I understand to be embraced within that shorthand description; and perhaps I could never succeed in intelligibly doing so...”

“But I know it when I see it”

— Justice Potter Stewart, concurring opinion in *Jacobellis v. Ohio* 378 U.S. 184 (1964), regarding possible obscenity in *The Lovers*.



What is a TREE?

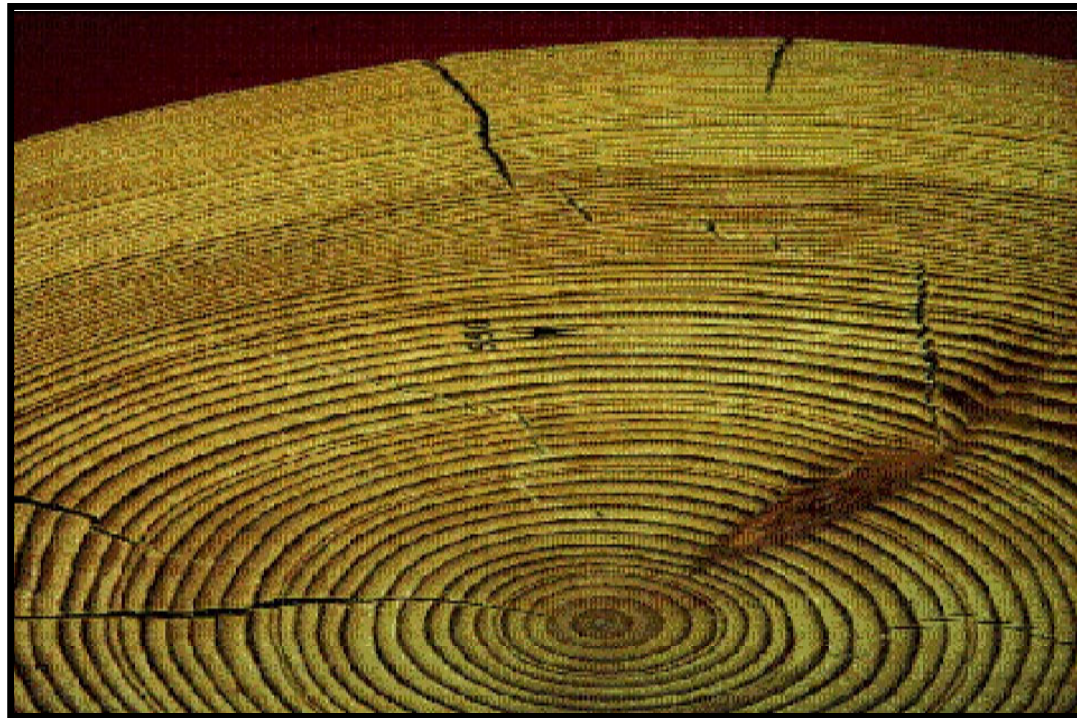
A big plant with a stick up the middle
(Colin Tudge)



But What To Do With These?



Woody Plants



Woody Plants

Coast redwood
Hyperion

**380
feet**



**Almost 4x
height of
Steen Hall!**

102 feet



Woody Plants

- Giant Sequoia
- General Sherman Tree
 - 274.9 feet tall
 - 32.65 foot average width at ground
 - 52,508 cubic feet of volume

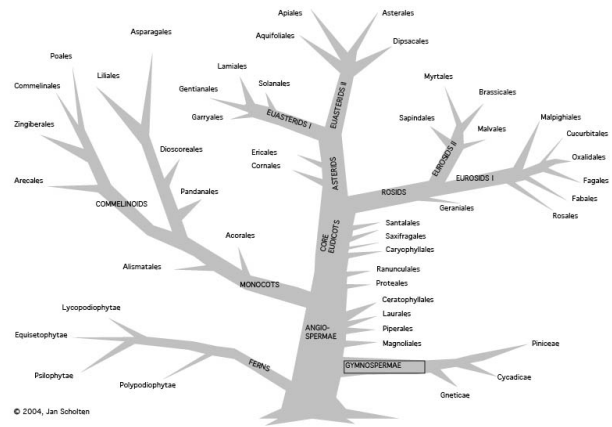


Woody Plants



What Do We Study in Dendro?

- Identification
- Morphology
- Taxonomy
- Evolution
- Silvics (Ecology)
- Distribution

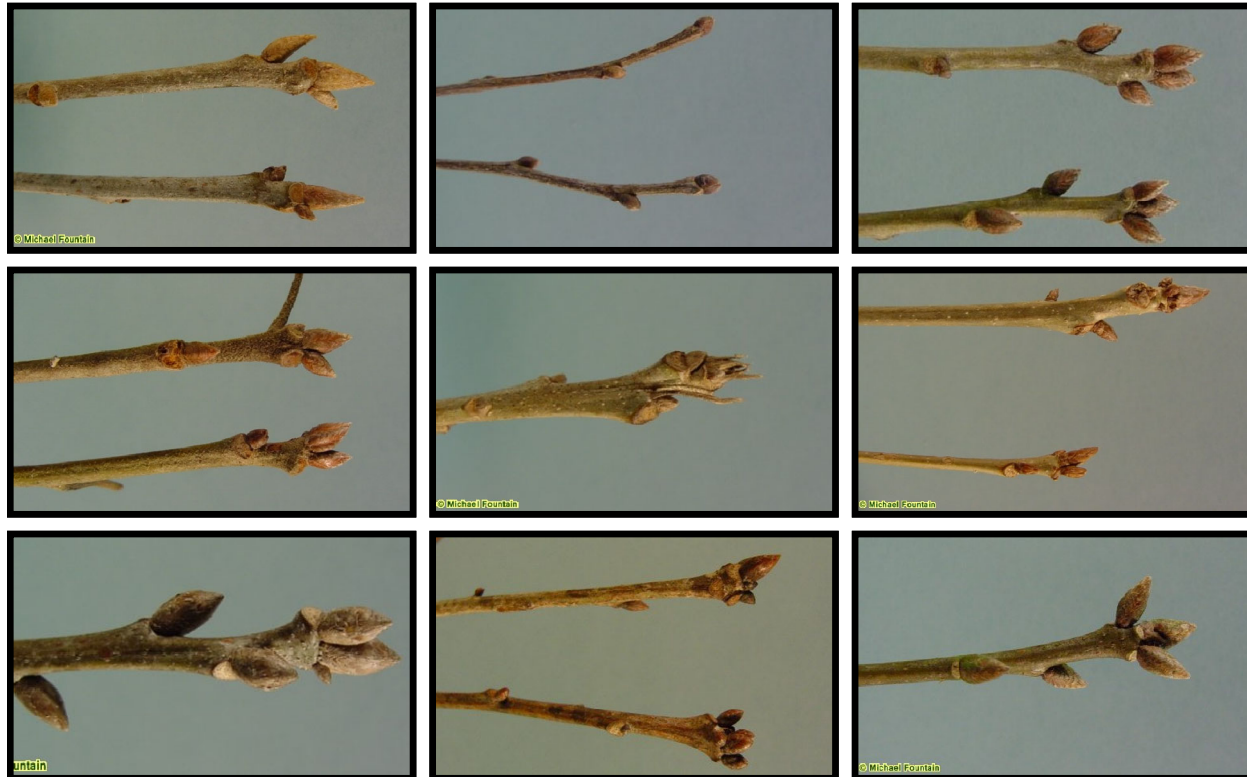


What Do We Study in Dendro?



IDENTIFICATION

What Do We Study in Dendro?



IDENTIFICATION

What Do We Study in Dendro?

Who's this?



**How do
you know?**

IDENTIFICATION

What Do We Study in Dendro?

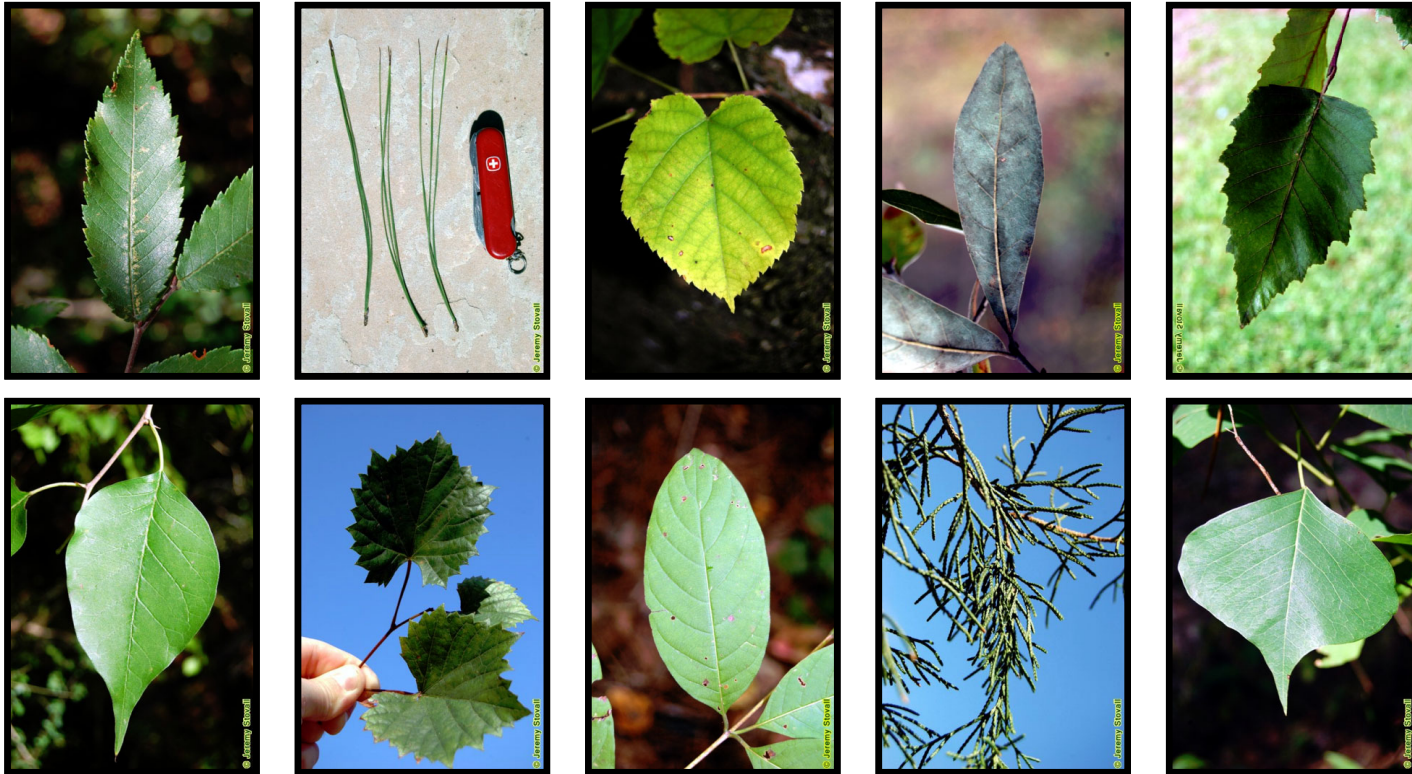
Who's this?



**How do
you know?**

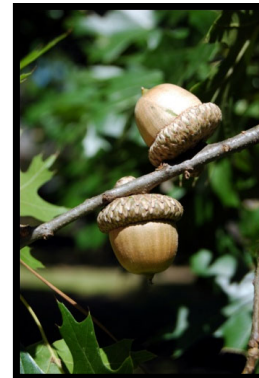
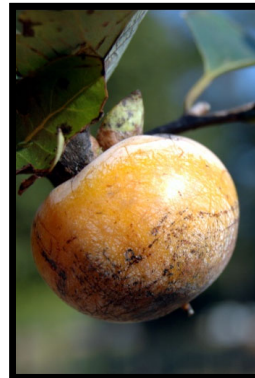
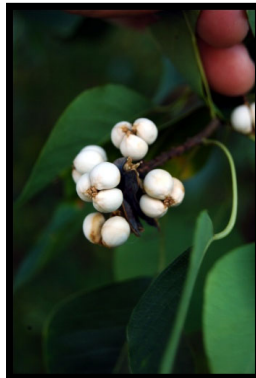
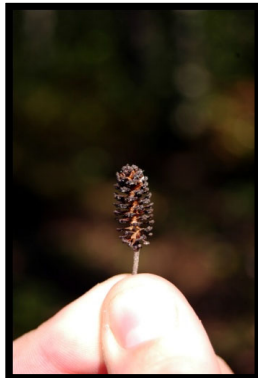
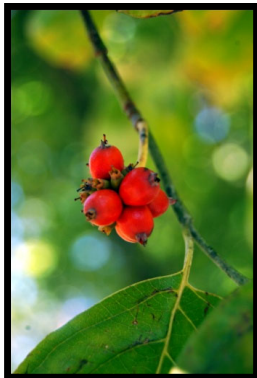
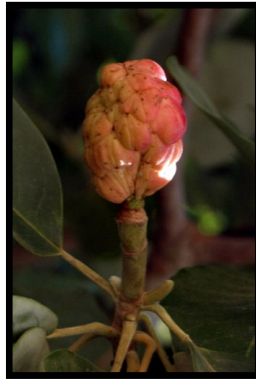
IDENTIFICATION

What Do We Study in Dendro?



MORPHOLOGY

What Do We Study in Dendro?



MORPHOLOGY

What Do We Study in Dendro?

What does bark
look like?



MORPHOLOGY

What Do We Study in Dendro?



MORPHOLOGY

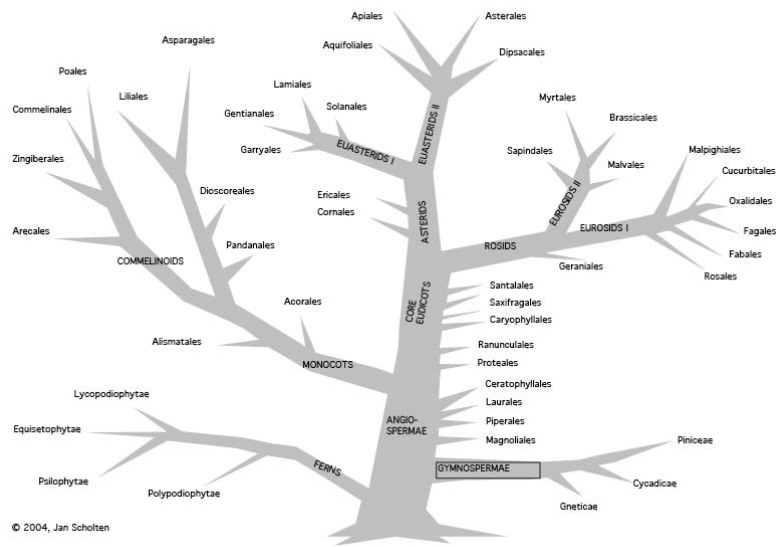
What Do We Study in Dendro?

HABIT: the growth form of a woody plant
Tree, shrub, vine, etc.



MORPHOLOGY

What Do We Study in Dendro?



Binomial Scientific Name

Genus + specific epithet

Acer rubrum

Acer floridanum

Quercus alba

Quercus macrocarpa

Toxicodendron vernix

Lagerstroemia indica

Liquidambar styraciflua

TAXONOMY

What Do We Study in Dendro?



EVOLUTION

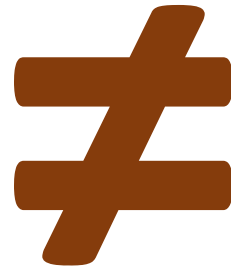
What Do We Study in Dendro?



EVOLUTION

What Do We Study in Dendro?

- Gymnosperms



EVOLUTION

What Do We Study in Dendro?

- Gymnosperms
 - “Naked Seed”
 - 600 Tree Species
 - 8 Families



EVOLUTION

What Do We Study in Dendro?

- Angiosperms
 - Flowers & Fruits
 - ~60,000 Tree Species
 - ~400 Families
 - ~30 Orders



EVOLUTION

What Do We Study in Dendro?



EVOLUTION

What Do We Study in Dendro?



EVOLUTION

What Do We Study in Dendro?



EVOLUTION

What Do We Study in Dendro?



EVOLUTION

What Do We Study in Dendro?



SILVICS (ECOLOGY)

What Do We Study in Dendro?



SILVICS (ECOLOGY)



What Do We Study in Dendro?



SILVICS (ECOLOGY)

What Do We Study in Dendro?



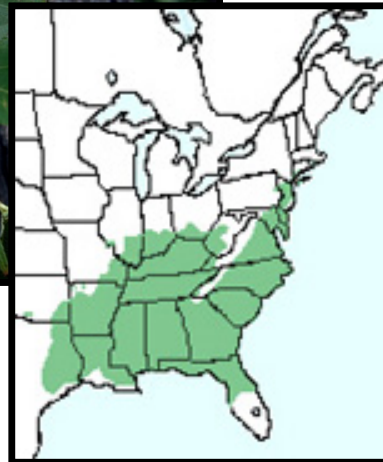
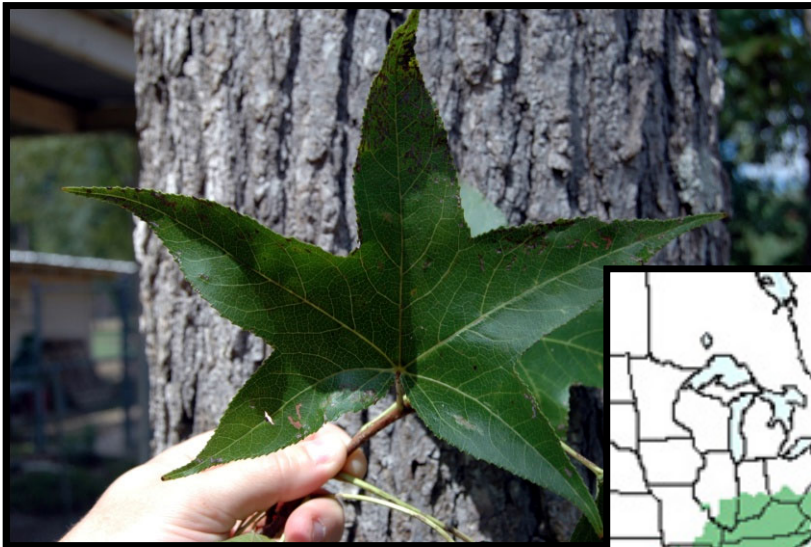
SILVICS (ECOLOGY)

What Do We Study in Dendro?



SILVICS (ECOLOGY)

What Do We Study in Dendro?



DISTRIBUTION